

## UPS General Meeting

You are welcome to join our general meeting where you have an opportunity to meet us and connect with us in person! If you would like to get involved as an active member of UPS, then it is the perfect opportunity to learn more about the offices and tasks. You can discuss with the existing office members how to manage responsibilities and the time investment required. Fika will be served!

Venue: Glasburen (in front of KBC cafe)  
Date: Thursday 23<sup>rd</sup> April  
Time: 16:00 – 17:00



## Social events by postdocs for postdocs


UPS organizes social events to enhance the work-life balance and help connect the postdoc community in Umeå.

### Postdocs found outside their natural habitat!!

-UPS Winter Hike at Strömbäck-Kont



Intrusive Swedish-isms during... Philosophy101



Question is... what makes us human?  
Anyone?  
...of. Explain.  
Uh. Shoes?  
Because... människor?

Have more intrusive thoughts?  
Want to talk about it?  
Come to  
**UPS SPRÅKCAFE**  
It's the support system you need

### UPS Pub Night

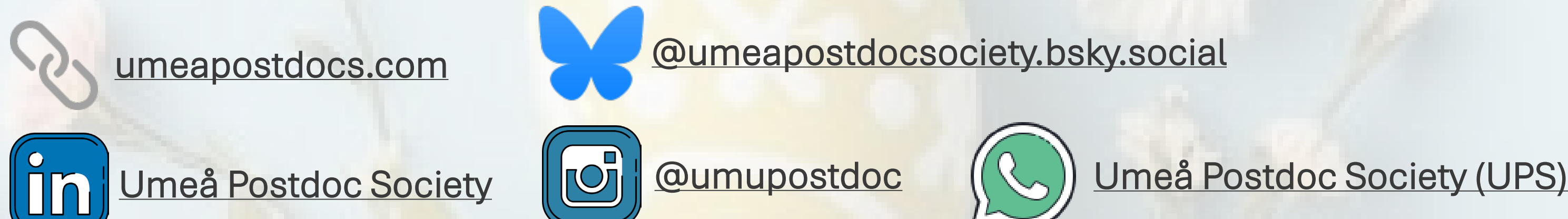
UPS Social Events Office invites you to our monthly Pub Night, the event where you can meet other postdocs and have some nice food and drinks after work.

Date: Thursday 16 April 2026  
Time: 18.00  
Venue: Lion Bar, Umeå

CONTACT: Katerina (+46 722267698) [katerina.cervena@umu.se](mailto:katerina.cervena@umu.se)

## Recruitment

We are always looking for active members in the society! If you want to be involved in the organisation of events, conferences, social events or in the functioning of the society, contact us via any of our channels.



Do you have any suggestions for content for Umeå Postdoc News?

The content of the newsletter is intended to facilitate and support Postdocs at Umu and SLU by focusing on relevant activities.

If you have any suggestions, let us know at our [website](http://website)

## Pint of Science 2026

# PINT OF SCIENCE

### Science talks in your city

Venue

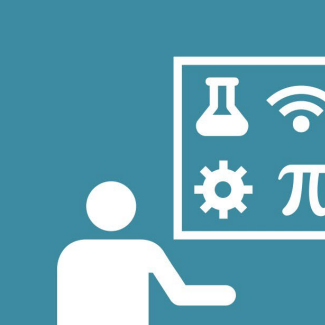


18-20 May 2026

A pint is a traditional unit of volume from the English measurement system. It equals one-eighth of a gallon — about 5.7 dl. Let's share a great glass of Science together!



2 pubs



9 speakers



6-8pm

Doors open 5.30pm

Free entry | Register at [pintofscience.se](http://pintofscience.se)



Do not litter!

@pintofscienceSE  
#pint26 #pint26se

CONTACT: Preeti Moar (+46700252629)  
[preeti.moar@umu.se](mailto:preeti.moar@umu.se)



## Postdoc Day & UPS General Assembly 2026

28th May  
Thursday

kl 0930 to kl 2000  
NTK Origo Kårhuset

More info to follow. Registration opens soon. Keep the date!

### UPS Språkcafé

Språkcafé will continue every week afterwards, same place, same time. Anyone who wants to brush up on their Swedish skills, no matter at what level you think you stand on, come over! No registrations necessary.

Date: Every Monday  
Time: 16.00-17.00  
Venue: KBC Café

CONTACT: Najat Dzaki [najat.dzaki@umu.se](mailto:najat.dzaki@umu.se)



INVITES YOU TO A NEW  
**Pub Night**  
THURSDAY, APRIL 16, 18h  
**LION BAR**  
Storgatan 55  
PLEASE REGISTER HERE: 



invite you to  
**Spring's Quiz Hike**

at  
**Nydalaområdet**

**Saturday, 18th April**  
11.00 am to 14.00 pm

Meet-up point:  
**Äventyrslekplats (Tomtebo-side)**

Brush up on those quiz skills and register [here](#) by the 14th of April:



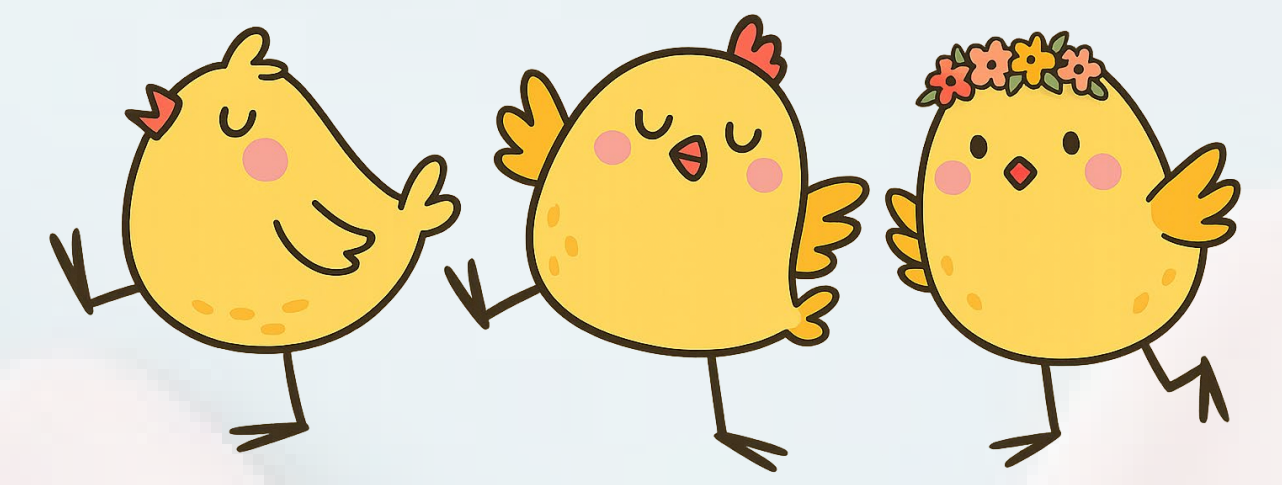
Find more stuff around town!

Visit Umeå Biljett Centrum Umeåregionens Bibliotek  
Filmstaden Folkets Bio Norrland Opera

## Useful information for Umeå postdocs

If you are new to Umeå. Visit our website for useful information [HERE](#)

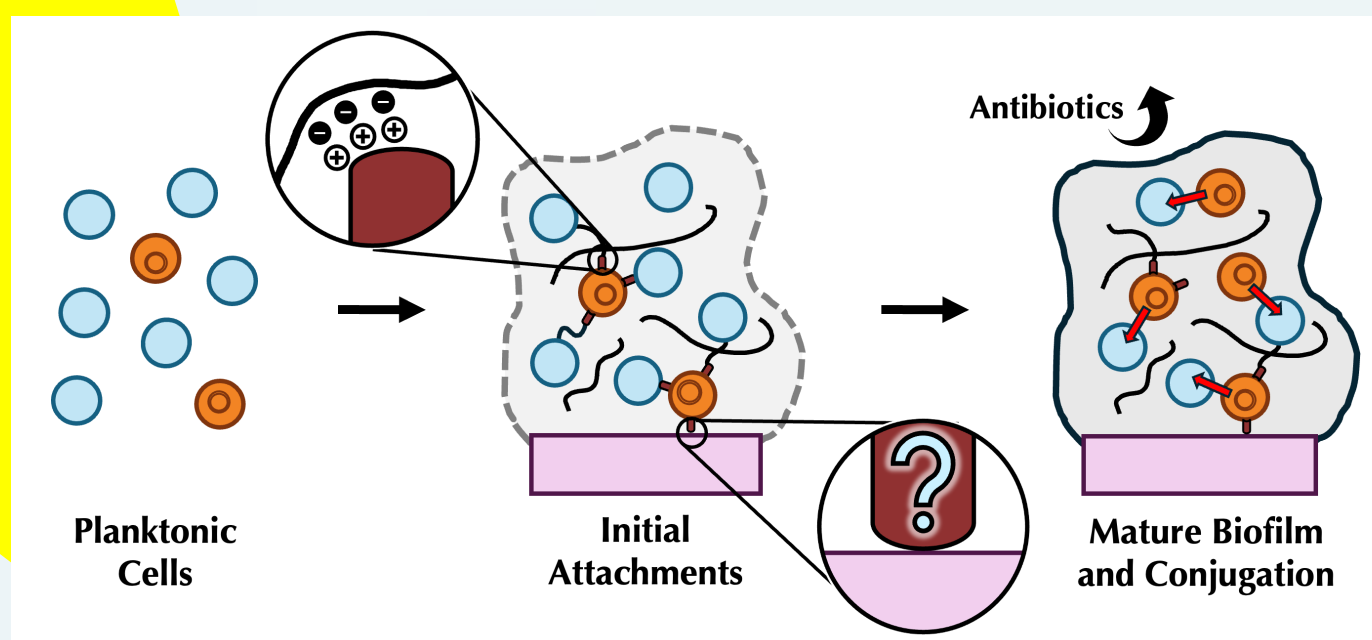
**Digital map at campus** — With the digital maps, it is easy to find your way around the Umeå campus, the hospital area and the Arts Campus. You can view the map in your computer's browser and in the app on your phone. Check out [MazeMap](#)



## Research highlights – Taylor Devlin

Taylor Devlin is a postdoctoral researcher in the group of Ronnie Berntsson in the Department of Medical Biochemistry and Biophysics. She was recently awarded a Marie Skłodowska-Curie Actions Postdoctoral Fellowship to pursue this research.

“My current project focuses on Gram-positive bacterial adhesions involved in biofilm formation and DNA transfer. Several Gram-positive species commensally reside in the human gastrointestinal tract but become problematic pathogens during hospital-acquired infections. The infection culminates in the formation of mature biofilms, where amassed cells and extracellular material fortify the pathogens against antibiotic treatments and limit their effectiveness. To make matters worse, widespread use of antibiotics in a hospital setting elevates the threat posed by these bacteria by selecting for antimicrobial resistance. These antimicrobial resistance genes often spread by conjugation through a Type 4 Secretion System. Adhesion proteins stabilize cell-cell contacts during the DNA transfer, and importantly, these same adhesion proteins promote biofilm formation and binding to host cells during infection. The goal of my project is to map the molecular details of important adhesin interactions, especially with human extracellular factors, using a combination of biochemistry and structural biology techniques.”  
– Taylor Devlin



## Career Development

### Marie Skłodowska-Curie Postdoctoral Fellowship Seminar 2026

The Research Support Office is organizing a Marie Skłodowska-Curie Postdoctoral Fellowship Seminar on 29th of April, 9:00-11:00. Participants will gain insights into the workings of the program, its potential benefits, and receive valuable tips for writing a competitive application. After the seminar, candidates will have an opportunity to receive individual feedback on their application from the RSO.

Register [HERE](#) by the 27th of April.

Organizer: <https://www.umu.se/en/research-support-and-collaboration-office/>

CONTACT: Simone Wenkel [simone.wenkel@umu.se](mailto:simone.wenkel@umu.se)  
Elena Glotova [elena.glotova@umu.se](mailto:elena.glotova@umu.se)

**About the MSCA Postdoctoral Fellowship:** The Marie Skłodowska-Curie Postdoctoral Fellowship (MSCA-PF) funds up to two years of research, covering both research projects and career development. Next call opens: **9 April 2026** (tentative)  
Application deadline: **9 September 2026**. Learn more about MSCA-PF [HERE](#).

### International Exchange

UMU International Office provides funding for international experiences within the Erasmus+ programme for postdocs. Visit [this website](#) or get in touch directly.

Email: [erasmusstipendium@umu.se](mailto:erasmusstipendium@umu.se)



## Postdoc voices matter

We are gathering more data as a part of our initiative to better understand the challenges experienced by students, researchers, and staff within our university.

We invite you to share any experiences, observations, or challenges you feel are important.

As part of this effort, we are collecting anonymous real-life experiences from members of our university community. These stories will serve two key purposes:

- To inform a panel discussion featuring individuals in positions of responsibility, where these experiences will be thoughtfully addressed.
- To be transformed into illustrated narrative storytelling pieces that raise awareness and encourage meaningful dialogue across campus.

This initiative builds on ongoing conversations around inequality, power, and responsibility in academia. For more context, you can read a recent [blog post](#) reflecting on these themes (inspired by discussions from the Women's Day panel). All submissions will remain completely anonymous.

You can submit your response using the form [HERE](#). The form closes April 10th.

CONTACT: Madhusree Mitra [madhusree.mitra@slu.se](mailto:madhusree.mitra@slu.se) or [info@umeapostdocs.com](mailto:info@umeapostdocs.com)

## Events by Umeå Biotech Incubator



### Umeå Lab Fair

📍 Tvistevägen 48A • 11.00-14.00

- ★ Norrland's premier lab fair with 20 exhibiting companies
- ★ Open to everyone - free entry!

### Life Science Pub

📍 Cinco • 16.00-21.00

- ★ Mingle with life science professionals from academia, industry & region
- ★ Participate in the Life Science Quiz!

## Curiosity, Constraints, and the Shape of a Research Life

### Swapping research directions:

> Game theory for hide-and-peek, human motion sports analysis, embroidery and sewing machines (??), back to kinematic analysis, then machine learning for industrial waste disposal plants (!!!?)  
Returning to dynamics, this time in "soft" robots... and now, statistics of generative AI for radiography (making sure we're not introducing AI-slop into healthcare!).

Maybe you can relate. Research isn't linear. You're constantly pulled in new directions; you find interesting connections and bridge gaps; one backtracks and returns years later in ways previously unenvisionable. My research "pathway" has seen ideas cascade and combine, and it's great when you have the flexibility and structure that allows you to make choices yourself about how you want to spend your (research) life.

But, to paraphrase, "one makes their own history, but not under one's own conditions."

We, especially as postdocs, are bound to ongoing social and economic trends and circumstances. I've moved countries, changed research directions so many times, introduced so many 'non-linearities' not out of a desire to find "interesting connections and bridge gaps", but out of pure necessity. It's the next job, it's a way to make sure I stay within academia, that I keep my publication output consistent.

That's not to say I didn't love the projects. They, and the people I've worked with all over the world have been amazing! Learning how to combine cross-stitching with PCB design or control a conveyor belt solely from a video feed embedded within a 1000°C incineration chamber... certainly not what I expected when finishing my PhD! But... these constant changes in research direction have been predicated on factors well outside my control; a narrative of expected instability and constant change would be a hard sell in other domains, but for academic research, this is the norm.

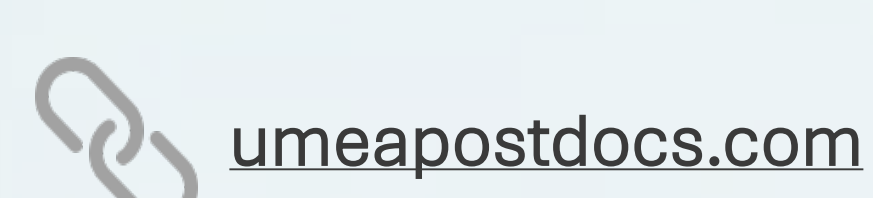
So, what comes next when my (short-term) contract finishes? I have funding applications written up. Will they be accepted? Will I, eight years after my PhD, finally meet the conditions that will let me "forge" a research "pathway"? Or will I be picking up my bags for a new project, in a new country, with a new language, and adding it to my 'jack-of-all-trades' portfolio?

– Brendam Michael

## Recruitment

We are always looking for active members in the society!

If you want to be involved in the organisation of events, conferences, social events or in the functioning of the society, contact us via any of our channels.



### Useful information for Umeå postdocs

If you are new to Umeå. Visit our website for useful information [HERE](#)

**Digital map at campus** – With the digital maps, it is easy to find your way around the Umeå campus, the hospital area and the Arts Campus. You can view the map in your computer's browser and in the app on your phone. Check out [MazeMap](#)

Do you have any suggestions for content for Umeå Postdoc News?

The content of the newsletter is intended to facilitate and support Postdocs at UMU and SLU by focusing on relevant activities.

If you have any suggestions, let us know at our [website](#)